

Title: The CGF. A therapeutic proposal for regenerative medicine

Authors: Corigliano Massimo*, Sacco Luigi*, Baldoni Edoardo**,

*International Academy of Implantoprosthesis and Osteoconnections

** University of Sassari, Italy. Postgraduate School in Oral Surgery, Dir. Prof. Edoardo Baldoni

info: Dr. Massimo Corigliano DDS, PhD. Email max@massimocorigliano.it

Abstract

Regenerative medicine is one of the biggest targets of today's rehabilitation therapies. The best tissue stimulation is derived from the autologous GFs which induce regeneration. For this purpose, many products and techniques have been used (i.e. Tissucol, PRP, PDGF, PRF, etc.). Though, none of these systems proved to be fully successful for an appropriate biostimulation. This is due to the fact that none of the above mentioned techniques exploit the regenerative potential of the whole blood. The CGF technique envisages the use of all the separated blood phases which can be disposed of individually in order to obtain the biostimulation of the related cells or tissues.

Key words: GFs, blood sample, CGF, autologous bone, serum, plasma, fibrin, particulate, platelets, unipotent stem cells, etc.

Introduction

The desire and the need to be able and reconstruct portions of lost or damaged tissue has always been one of the most greatly studied therapeutic aspects of modern medicine.

In dentistry, with the coming of the GBR, there has been a significant input in the search for materials and growth factors, applicable to bone regeneration techniques (bib 1-29).

We therefore went through several techniques, mainly using different types of both natural and synthetic materials to construct both the membranes and the cavity fillers.

All sorts of materials have been used: from Gore-tex to pericardium, hydroxyapatite, organic glass, tricalcium phosphate, polyglycolic acid, animal bone and human bank bone, and many others. They all aim at bio-stimulating or osteo-inducing bone regeneration, but their best application is to be used as fillers.

In fact, all these materials, which represent the history of the GBR, have something basic in common: they are not alive. This could seem irrelevant, but in terms of real osteo-induction or bone regeneration, it becomes fundamental.

In regenerative medicine there are many factors involved in this process and rely mainly on the biochemical and hormonal metabolism of each patient.

The factors involved in helping tissue regeneration are:

Stem cells:

They respond to a scale of proliferative power with various potentials according to the state of differentiation, and can be classified as:

- Progenitors of other cells
- Undifferentiated

- Non specialised
- Unlimited or prolonged proliferation

When appropriately stimulated, the stem cells can differentiate and specialise, and therefore can be classified in:

- Totipotent**
- Pluripotent**
- Unipotent**

The unipotent stem cells are present in blood.

Natural local modulators

The most widely known local modulators produced by bone reshaping and stimulation are:

- *Insulin-like Growth Factors (IGFs)*

Insulin-like growth factors are hormone-dependent polypeptides and can be divided in IGF-I and IGF-II. They show a high concentration in periosteum, in the fibrous callus of fractures, in the ectopic bone induced by the demineralised bone matrix. They are produced by the bone cells, but can be incorporated in the calcified matrix and released during re-absorption.

They mainly exert their effects on osteoblast precursors, stimulating their differentiation and proliferation, but also on the osteoblasts themselves, which are stimulated to replicate. They also promote the production of type I collagen and bone matrix synthesis, helping to accelerate the healing process.

- *Fibroblast Growth Factors (FGFs)*

These are a large family of polypeptides (from FGF-1 to FGF-18) and the most important are FGF-a (acid) and FGF-b (base), also called heparin-bound growth factors.

They contribute to bone healing after fractures, to the development of the vascular, nervous and skeletal systems and in a variety of normal and neoplastic tissues.

They help angiogenesis, chemotaxis and mitogenesis, stimulating the growth of fibroblasts, myoblasts, osteoblasts, endothelial and neuronal cells.

- *Cytokines*

The cytokines, especially type IL-1 and TNF- α , are powerful stimulants for bone re-absorption:

-IL-1 acts directly on the bone where, through the activation of the transcription factors NF-kB, it induces the synthesis of other bone re-absorbent substances, such as the IL-6, TNF- α , and PGE2;

-IL-6 and TNF- α not only do they stimulate bone re-absorption, but also further osteoclastic cell replication (osteoclastogenesis);

-the PGE2 on the one hand mediate the bone re-absorption induced by the IL-6, and, on the other hand, promote the recruitment of the cells in the osteoblast line, stimulating collagen synthesis.

-the VEGF (Vascular Endothelial Growth Factor) stimulates the growth of new blood vessels. It is produced by the peripheral circulatory system cells (macrophages and T cells) but especially by platelets. It is directly involved in the control of the behaviour of the endothelial cells, particularly in their proliferation, migration and specialisation. This simple cytokine is just enough to stimulate angiogenesis.

Bone growth factors (GFs)

It has been highlighted how bone regeneration takes place under the systemic influence of hormones such as Parathormone, Calcitonin and vitamin D etc., which regulate the new bone fixation and re-absorption process.

The most active factors are codified as BMPs (Bone Morphogenetic Proteins). They stimulate and mediate the growth of the target cells, through a surface cell binder-receptor interaction (Andreana e Ciancio 1993).

The growth factors are present in tissues or parts of tissues, i.e.:

- in blood and plasma,
- in the bone matrix, where they play an important role in the new bone morphogenesis, reorganisation and reshaping, as well as bone healing.

- *Insulin-like growth factors*

The insulin-like growth factors (IGF-I and IGF-II) or somatomedin, stimulate the activity of the osteoblasts by which they are produced and increase collagen production.

- *Osteoprotegerin (OPG)*

The Osteoprotegerin (OPG) is a cytokine from the family of the Tumour Necrosis Factors that, unlike the TNF- α , has a powerful action in inhibiting the osteoclastogenesis;

- *Transforming Growth Factors (TGF)*

The Transforming Growth Factors (TGF) include a super-family of molecules responsible for the control of many aspects of cell functions. They are synthesised by the platelets, macrophages, endothelial cells, keratinocytes and chondrocytes, the TGFs- β are mainly expressed by mature, fully-active osteoblasts, both during the bone growth and development and during the healing of fractures. Among these factors, the TGF- β plays a fundamental role in the growth and differentiation of many cells, including the osteoblasts. Its production in the osteoblasts is stimulated by the vitamin D, PTH, estrogens and testosterone. Furthermore, this factor inhibits bone re-absorption, preventing the formation of the osteoclastic precursors and stimulating the apoptosis of mature osteoclasts;

- *Bone Morphogenetic Proteins (BMP)*

The Bone Morphogenetic Proteins (BMP) induce the pluripotent cells to differentiate into cells able to produce bone and cartilage.

They are expressed during puberty, but also in the bone callus formation after fractures, and locally after the implant of micropatterned substrates. Furthermore, they are involved in the morphogenesis and development of many other tissues and organs, such as hair follicles, heart, kidneys, eggs, prostate and, most of all, are involved in the morphogenesis of tooth tissues.

- *Fibroblast Growth Factors (FGF)*

The Fibroblast Growth Factors (FGF) play an important role in bone regeneration and development and in the fracture healing process. Their main task is to induce bone angiogenesis, which is a critical moment for the formation of bone tissue.

Local synthesis modulators

The best known local synthesis modulators, produced for the stimulation and reshaping of bone, have been the subject of a great deal of research.

Many different systems for the preparation and concentration of the growth factors have been developed so far, which we will list hereby:

Existing technologies:

- Fibrin glue (Tissucol Baxter)
- Platelet concentrate (cPRP, Marx 1998)
- Platelet-Rich Plasma (PRP)
- Platelet-Rich Growth Factors (PRGF, E. Anitua 1998)

- Platelet-Rich Fibrin (PRF, J. Choukroun, 2001)
- C.G.F. (Concentrated Growth Factors 2006, IAIO)

- Fibrin glue (Tissucol Baxter)

The human fibrin glue is atoxic thermal-treated biologic adhesive which is highly tolerable. The glue contains both fibrinogen and factor XIII (re-established at 37° with a aprotinin solution which helps slowing down reabsorption inhibiting local fibrinolysis). The bovine thrombin is re-established in a calcium chloride solution, in a concentration of 4 U.I./ml or of 500 U.I./ml. The solutions, kept at 37°, are mixed to obtain the right fibrin glue at the time of its application. The two components are mixed with a double syringe called duploject which will make the 2 component react once the needle is exposed.

The mostly used fibrin glue at present is the Tissucol by Baxter. The fibrinogen concentrate is obtained through repeated steps of thermo-chemical precipitation and the concentrations of fibrinogen and factor XIII are very high. The thrombin solutions are prepared with human plasma (bib 30-49).

- *Platelet-Rich Plasma (PRP):*

The platelet concentrate obtained from the patient's blood, allows for the use of autologous growth factors (PDGF, IGF-I, IGF-II, TGF- β 5), which are neither immunogenic nor toxic, and which can accelerate the normal bone regeneration processes and increase both the quality and quantity of the newly-formed bone. When the platelet concentrate, set up in the form of a gel, is mixed with the filling material, (the best filler is the autologous bone) we therefore obtain a graft tissue with optimal characteristics, which is in theory far better than autologous bone alone due to its ease of stabilisation and better mineralisation times.

The technique envisages the collection of approximately 60 ml of venous blood from the patient, yielding, within 45 minutes, a platelet concentrate through two separate centrifuge phases. The interim product is a *Platelet-Rich Plasma* (PRP).

- In order to obtain the PRP it is necessary to use a specific laboratory testing equipment and to be assisted by a haematologist.

Once the final platelet concentrate has been obtained (PRP) it is activated to form the graft gel, by adding 80 mM of calcium chloride and Botropase (bib 50-162).

The PRP is, therefore, a concentrate of platelets, whose destruction releases the growth factors called *Platelet Derived Growth Factors* (PDGFs) which induce the osteoneogenesis. They promote angiogenesis and act on the osteoblast precursors, on which they induce a significant mitogenic action. They increase the number of cells in the osteoblast line, are able to induce the osteoblasts themselves to cell replication and collagen synthesis, but their differentiation and morphogenetic function with regards to the bone tissue is undoubtedly less than other growth factors. Actually, according to the international bibliography, the bone growth induced by the PRP is 10% of the applied volume so, in spite of its biologic potential, the PRP has got a rather low osteoneogenic performance (Malchiodi 2001, CED Rome, bib. 163-166). For this reason, other technologies have been developed, such as the PRF.

- Platelet-Rich Growth Factors (PRGF, E. Anitua 1998)

The PRGF is the result of the centrifugation of venous blood which is located under the Buffy Coat and is taken with a pipette. The PRGF, mixed with biomaterials, buffy coat or directly used in situ, enables the biostimulation of the tissue that needs to be regenerated, giving more power to the local healing action (bib 167-217).

- Platelet-Rich Fibrin (PRF, J. Choukroun, 2001)

It is obtained from fresh blood taken from the patient's vein.

According to the protocols described by Choukroun et al from 2001 (bib 214-257), in order to obtain the PRF, we simply need to centrifuge the blood to separate its components.

As PRF is an unchanged blood product, it can be developed in the dentist's cabinet, as long as the centrifuge is certified for this use.

The PRF obtained is a fibrin-rich dense gel, resistant to traction and tear.

It does not need to be covered and can act as a membrane.

The PRF works as a biostimulator on the receiver tissue.

A significantly appreciated effect of the PRF is its analgesic, antalgic and anti-inflammatory action.

The PRF is developed by centrifuging the blood for approximately 12 minutes at 2700 revs./min. and, once separated from the other blood components, it is temporarily stored in a refrigerated environment at a constant temperature between 12 and 15°C.

- C.G.F. (Concentrated Growth Factors 2006, IAIO)

As we believe in the extraordinary regenerative power induced by the blood, and we know that all the necessary components for regeneration are free and circulating, we investigated on how to use all the healing and regenerative characteristics, and not only some of its parts as proposed by the previous protocols.

Unlike the PRP, PRGF and PRF, the CGF is a therapeutic protocol obtained through the separation of the venous blood, subject to a fixed temperature, with a rotor turning at alternated and controlled speed and always accelerating below RCF300.

The CGF is characterised by 4 phases:

1. a superior phase represented by the serum (blood plasma without fibrinogen and coagulation factors),
2. an interim phase represented by a very large and dense polymerised fibrin block
3. a liquid phase containing the GFs, white line cells and stem cells waiting for stimulation and to differentiate into specialized cell types
4. the lower red portion is a viscous, dense, platelet-rich coagulation (Fig. 1, sample)



The phases and their components are as follows:

1. SERUM:

The serum is the lightest and most liquid part of the blood.

It is fundamental for our technique because it represents the liquid able to amalgamate all the grafts and supplies many biochemical components and activators. It is fibrinogen-free and has only a few cells. It should be kept cool and mixed quickly in order to avoid denaturing the proteins.

It is clear straw yellow in colour and consists of:

- 92 % H₂O
- 7 % proteins, mineral salts, CO₂:
 - Proteins: albumin, antibodies
 - Nutrients: glucides, amino acids, lipids
 - Enzymes
 - Hormones
 - Inorganic electrolytes

The serum is used to wash the cavity, to cover and protect all the regenerated portions.

2. FIBRIN Buffy Coat:

Thanks to the calibrated centrifugation carried out with the Medifuge phase separator (Silfradent, Italy), through the polymerisation of the fibrinogen molecules (FG) the fibrin block is obtained as comprising three-dimensional polymer networks with interwoven fibres, all collected in a single phase in the form of gel.

During the polymerisation, the fibres' diameter grows until the end of the reaction (fig. 2-3).



Fig. 2



Fig. 3

This concept explains why it is important to set up the equipment specifically, guaranteeing the maximum exploitation of the blood's potential by controlling the following settings:

- Speed
- Temperature
- Time
- Acceleration and controlled speed
- Gravitational acceleration of approximately RCF200

The development and growth of the fibrin gel block during the centrifugation, and especially during the polymerisation phase, allows for a volume growth of the chains in all directions (fig. 4).



Fig. 4

In this way, many corpusculated components are dammed, determining numerous therapeutic actions, such as:

- plasma and platelet cytokines: repair, anti-inflammatory and pain-killing effect during repair (TNF- α);
- platelets: transmission of the signals and release of the GFs. The most important are the PDGF-BB, TGF β 1 and IGF-1 (fig. 5).

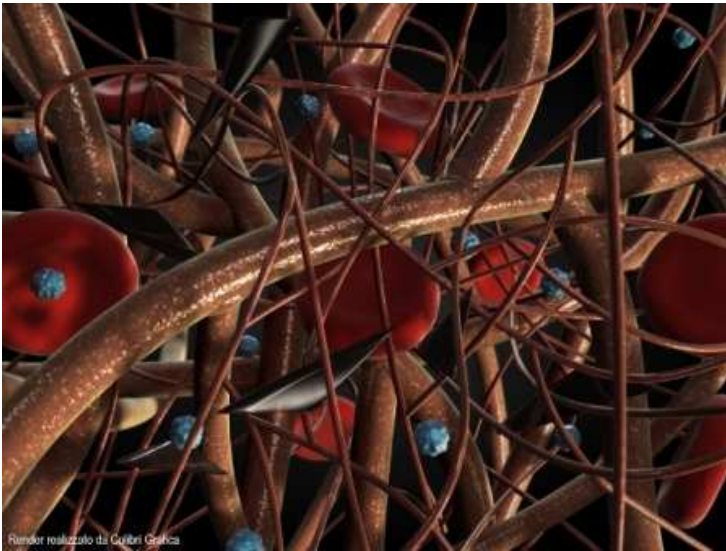


Fig. 5

We therefore obtain significant volume fibrin gel blocks with excellent resistance that can be used as:

- cavity fillers
- membrane supports
- autologous membranes
- particles to be mixed with another filling material.

This translates into simplified work and a high power for regenerative induction and a greater versatility of use of the fibrin block, ranging from the use of the whole block to the particles or membrane.

3. The Growth Factors and the unipotent Stem Cells located just below the buffy coat and above the dense clot portion. This phase can be aspirated with a pipette and mixed with autologous bone in order to obtain an extremely performing activated graft.

4. COAGULATION:

In the CGF technique, the red phase consists of concentrated red and white blood cells, platelets and clotting factors. It looks like a dark reddish dense gel and can be used pure or mixed with fibrin particles and/or autologous or heterologous bone when filling very large cavities.

We can therefore assess that the CGF in regenerative medicine should therefore be conceived as a multifactor stimulation system. In fact, all the phases and components are used according to specific requirements.

This versatility and multipurpose application make it stand out from all the other techniques proposed so far.

Materials and Methods

In order to obtain the CGF, we begin by taking a venous blood sample using a 21 x $\frac{3}{4}$ gauge butterfly vacuette needle and a vacuum-packed Vacuette 9 ml Z Serum Clot Activator (Greiner bio.one, Austria, fig. 6).



Fig. 6

Once filled, the test tubes are quickly placed into the rotor of the **Medifuge (Silfradent, Italy) centrifuge accelerator**, without shaking them (fig. 7).



Fig. 7

This has exclusive characteristics with regards to:

- mechanical structures and characteristics, such as, for example, the monolithic sterilisable rotor (fig. 8)



Fig. 8

- calibrated angled test tube (fig. 9)

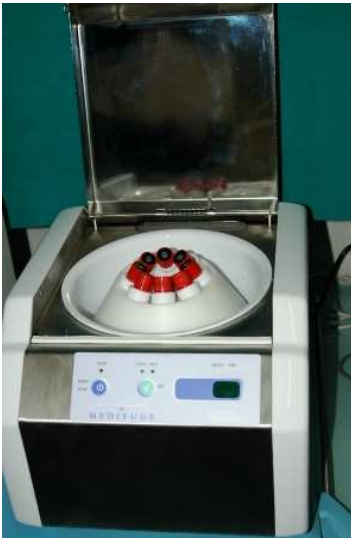


Fig. 9

- working temperature
- disinfection of the rotation chamber
- dynamic characteristics
- settings: start, acceleration, speed and brake for the fluid to be centrifuged
- automatic, closed lid disinfection.

All this permits to obtain more greatly differentiated components right from the test tube.

- After approximately a 13 minute rotation, the serum is separated from the other phases of the CGF and stored in a specific sterile dappen (fig. 10).



Fig.10

- The fibrin phase is separated and stored in diluted antibiotic solution (Lincocin 600 mg).
- The initial portion of the coagulation containing the GFs and the stem cells are immediately stored in the dappen provided
- The coagulation, which is rich in red blood cells and platelets, as well as iron, calcium and other fundamental components, is prepared to be used for the

preparation of fillers, for mixtures of biomaterials or autologous bone taken for osteotomy (fig. 11).

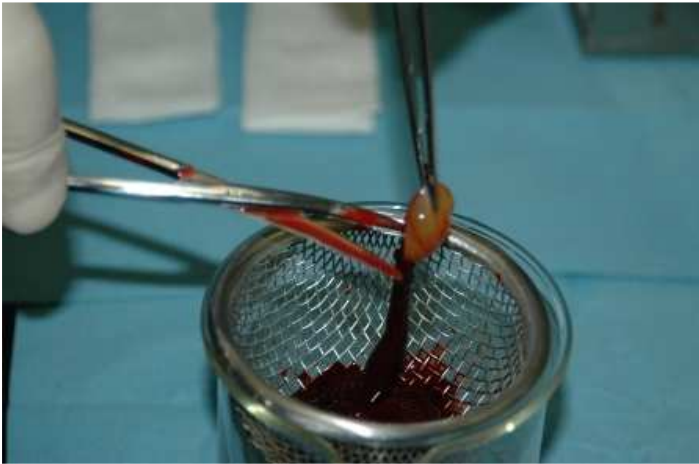


Fig. 11

The fibrin block, separated from the red phase, is prepared to be transformed according to needs: direct cavity graft, shaped membrane with the use of the specific forceps provided (fig. 12-13),

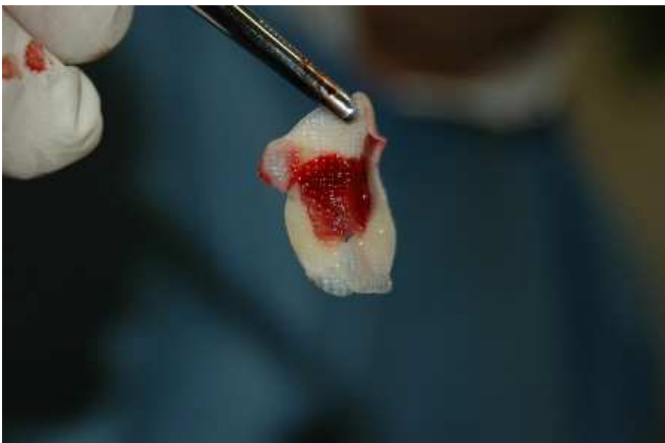


Fig. 12



Fig. 13

graft particle to be mixed with biomaterial or living autologous bone (fig. 14).



Fig. 14

- A specific process is necessary to obtain an autologous CGF graft for large cavities. In this case, the fibrin block is cut into particles of approximately 1-2 mm while the clot is fragmented and mixed with the fibrin particles, with fresh blood and further graft material, best if autologous bone. To increase the softness of the mixture, some serum can be added. This is all mixed and homogenised mechanically in the specific **Round Up device (Silfradent, Italy)** for approximately 6 seconds (fig. Round Up 15).



Fig. 15

This dense and particularly adhesive paste is inserted into the cavities or bone defects, proving to be extremely mouldable. Then is all covered by applying the CGF membrane obtained by squeezing the fibrin blocks with the forceps provided. CGF membranes are used to cover wounds or reconstructed areas, which can stick together thanks to their adhesive power and, thanks to their elasticity, can be sutured.

At the end of the surgery, you can brush the wound with some serum.

Case Report 1

Patient P.G., male, 36 years old, showing a swelling around tooth 21 and a recurring leak of fistulous material (fig. 16).



Fig. 16

The x-ray showed an apical lesion through all the periodontal area (fig. Rx 16 bis).



Fig. 16 bis



Fig. 17

The patient was healthy and, due to the lesion, we decided to remove the tooth and place a prosthetic root, ROP technique (TMI Pressing RSM), together with the osteoneogenesis of the area involved.

We proceed by taking 8 blood samples (Vacurette) from the patient's forearm and centrifuge the with the Medifuge (Silfradent, Italy) according to the CGF protocol. After undergoing plexic anaesthesia, the tooth is removed carefully to avoid fracturing the residual corticals (fig. 18).



Fig. 18



Fig. 19



Fig. 20

The bone is then probed overcoming the apex of approximately 2 mm, and cavitory osteotomy is performed at very low speed without using water (fig. rx probe 21).



Fig. 21

A prosthetic root is then inserted by ROP technique, purposely designed for 4,7 x 15 mm post-extractive implants (TMI, Pressing RSM, fig. 22 implants).



Fig. 22

The extraction socket in between the radicular prosthetic and the alveolar bone is then filled with fibrin particles mixed with autologous bone collected during osteotomy and with the upper part of the clot (fig. 23 filling).

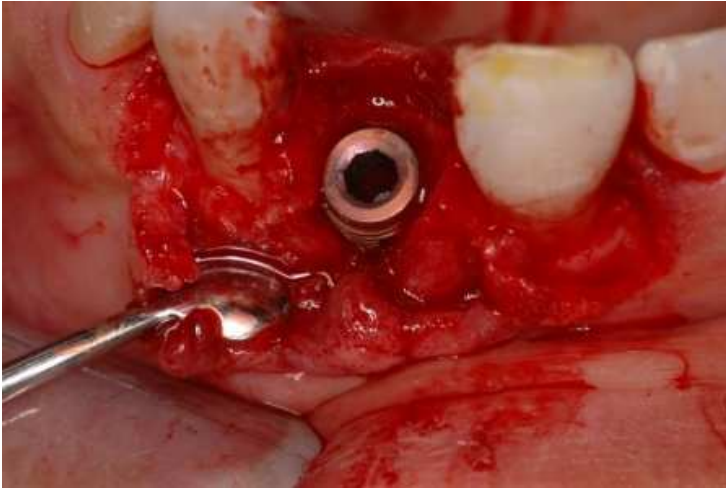


Fig. 23

The extraction socket is the filled with some crossed fibrin membranes as to building up a tissue of subsequent layers. This procedure will protect and stimulate the wound because it will act as an isolator on the graft and will boost healing thanks to the optical power of the fibrin which will transfer the healing signals released by the periosteum and by the surrounding GFs. At the end of the surgery, the crown is then glued with composite material for aesthetic purposes (fig. 24).



Fig. 24



Fig. 25



Fig. 26



Fig. 27

The patient will then undergo Megneto Electric Therapy, both professional and with Combined Magnetic Fields with 6 sessions every 3 days, and at home with MET for

45 days (MFI, Italia). The patient will undergo check up x-rays after 15, 30 and 45 days (fig. 28).

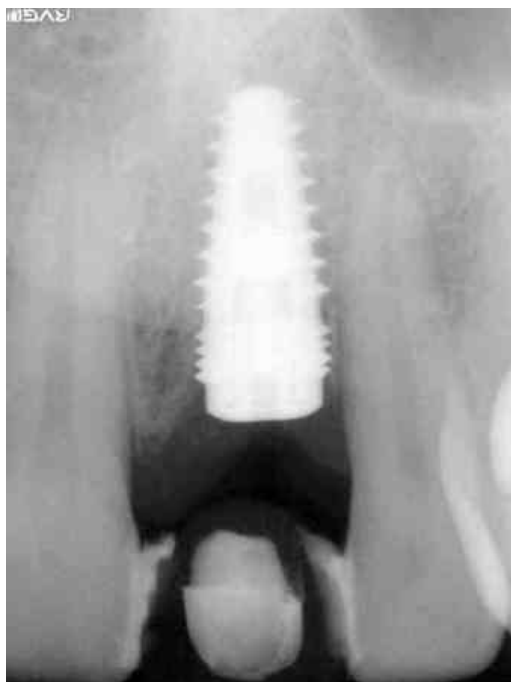


Fig. 28

After 60 days bone regeneration is completed and the patient will be ready for crown prosthetic therapy (fig. 29).



Fig. 29

Case Report 2



Fig. 30 Initial X-rays

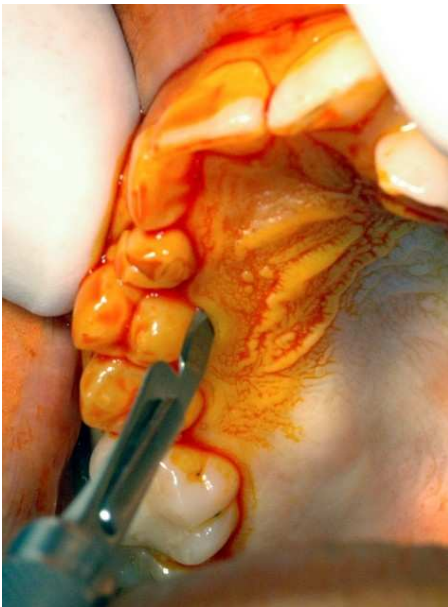


Fig. 31 Detachment



Fig. 32 Detachment

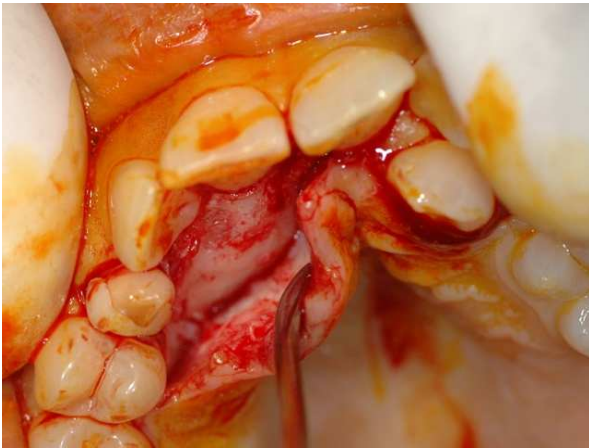


Fig. 33 Detachment

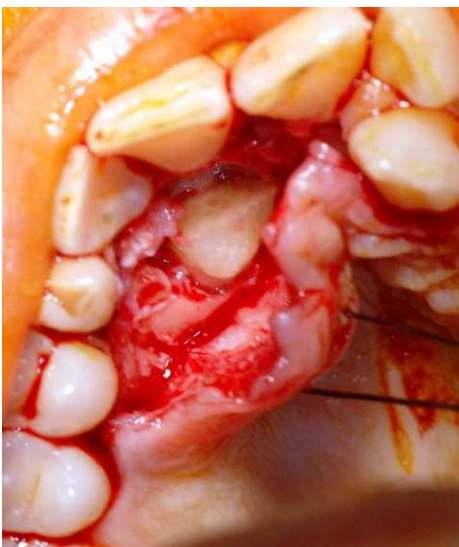


Fig. 34 Impacted canine tooth

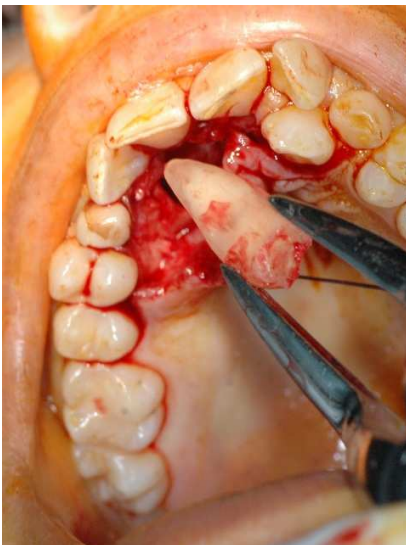


Fig. 35 Extraction of impacted canine tooth

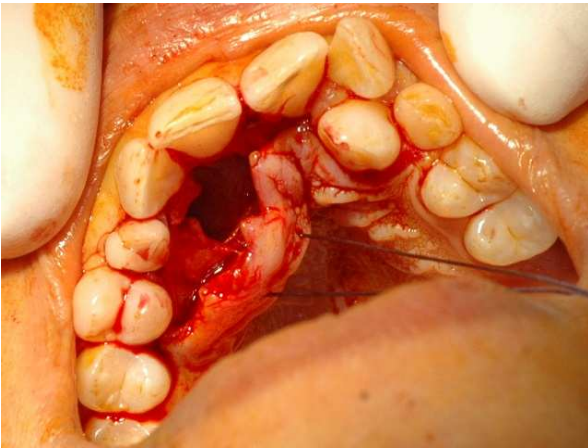


Fig. 36 Post-extraction socket



Fig. 37 Fibrin block



Fig. 38 Cavity filling with Combioss

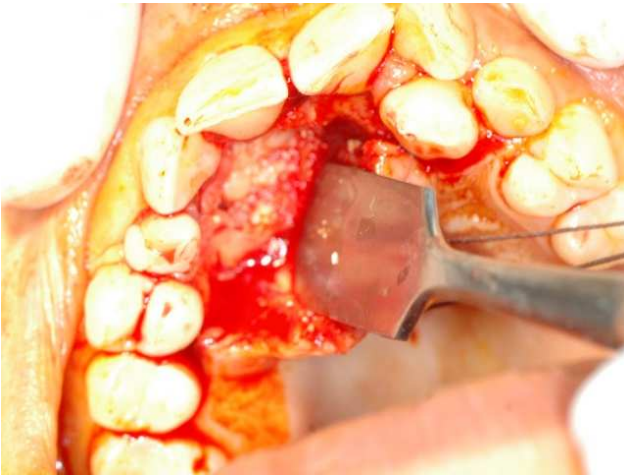


Fig. 39 Cavity filling with Combioss and CGF

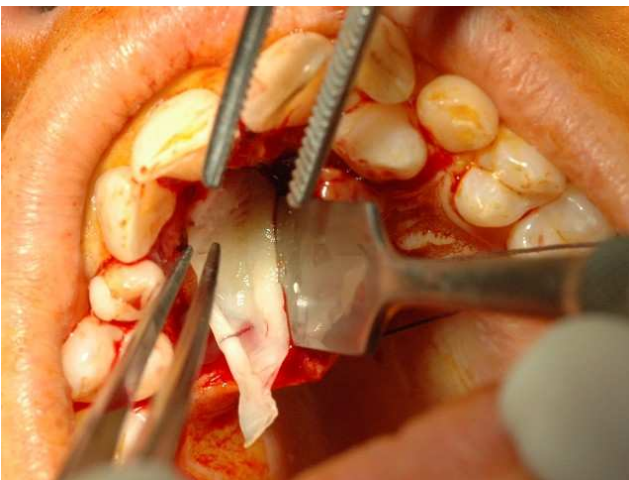


Fig. 40 Cavity filling with CGF membrane



Fig. 41 Cavity filling with CGF membrane

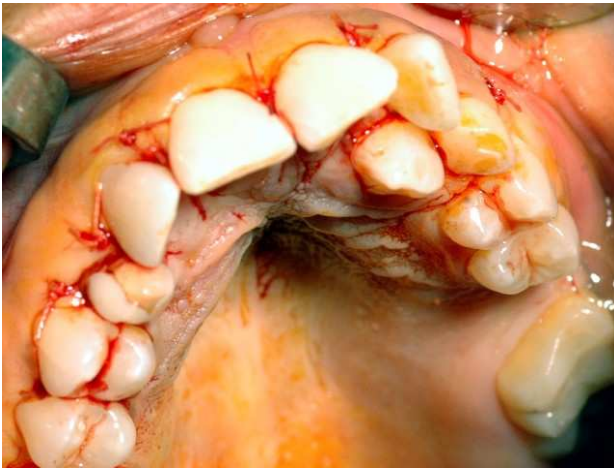


Fig. 42 Stitched wound, covered with serum

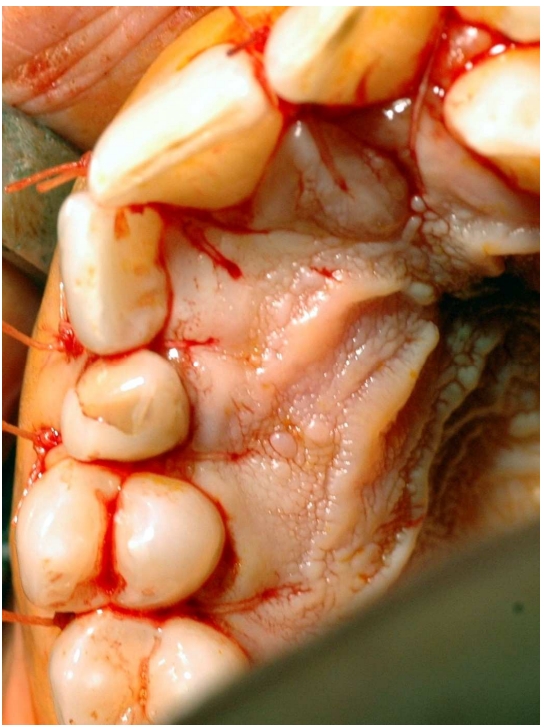


Fig. 43 Stitched wound, covered with serum



Fig. 44 3 days after surgery



Fig. 45 Quality of the tissues after 3 days



Fig. 46 X-rays after 45 days

Results

All the clinical cases that have been treated with the CGF showed a high regeneration performance both on the bone and on the soft tissues, in half time. The wounds proved to be extremely resistant with infections, decreasing the risk of postoperative bacterial contaminations. The use of the CGF in membrane act as an excellent barrier, very handy, adhesive and suturable, ending up being extremely helpful in surgical procedures. Furthermore, the CGF proved to have an anti-inflammatory and painkilling action. The soft tissues treated with the CGF will look pink in the very first days.

Conclusions

The CGF will permit to obtain:

- a system composed of an individual mix of fibrin gel blocks with a low concentration of GFs,
- activated clots with highly concentrated GFs located in the platelets which will disgregate during the centrifugation
- the serum which contains the proteins and diluted immune components.

The application of these phases on the tissues will accelerate their regeneration or healing. The mix of the CGF and fresh living autologous bone is ideal for the osteoneomorphogenesis. This is why the CGF is a reliable alternative to the existing techniques which exploit the blood transformation without adding any synthetic or catalysing component. The stimulating and healing power of the concentrated GFs contained and obtained through the CGF will help recovering all those tissues which undergo regeneration.

Index of illustrations

- Fig. 1: blood sample after CGF centrifugation: serum, buffy coat, GFs and stem cells, clot
- Fig. 2-5: CGF chart: this sequence shows how the buffy coat molecule in the CGF is extremely ordinary and help wedging the anticorpal molecules, platelets, white, red and stem cells.
- Fig. 6: blood sample with sterile Vacuette
- Fig. 7: Medifuge phase separator (Silfradent, Italy). This device will guarantee the control of the right speed and acceleration to separate the blood without damaging its components.
- Fig. 8: Medifuge's monolithic rotor. It is dismountable for sterilisation.
- Fig. 9: Medifuge with blood samples in place.
- Fig. 10: set of sterile dappen to separate and store the blood phases obtained with the Medifuge.
- Fig. 11: Clot separated from the fibrin block. The former is stored in a sterile dappen which is closed to avoid the excessive oxidisation of the red cells and the emoglobine and to avoid to over-breaking the platelets.
- Fig. 12: the membrane obtained by using the forceps provided.
- Fig. 13: membrane after forcep shaping and placed over the proper spatula for an appropriate an easy positioning.
- Fig. 14: fibrin particles mixed with grafting material. The mix of these 2 component with the Round Up takes only 6 seconds.
- Fig. 15: Round up
- Fig. 16-16 bis: x-rays of tooth 21 showing an advanced erosive apical lesion.
- Fig. 17: vestibular image showing a sore mucous membrane and a fistulous scar on an apical level.
- Fig. 18: periotomy with scalpel 11 blade and with straight syndesmotome to avoid damaging the bone during the extraction.
- Fig. 19: extraction done, apex check-up and cleaning and disinfection of the postextraction socket
- Fig. 20: mucoperiosteal flap showing a major bone lesion on the vestibular cortical which will require bone regeneration.
- Fig. 21: apical probe for at least 2 mm to insure an appropriate primary stability to the future prosthetic root.
- Fig. 22: postextractive radicular prosthesis. This prosthetic root permits an excellent anchorage and is particularly suitable for these procedures. Although the vestibular wall is missing, the implant diameter must be as similar as possible to the cavity.
- Fig. 23: graft made of buffy coat, GFs, stem cells mixed with autologous bone and part of the coagulation obtained through the Round-up device.
- Fig. 24: Cross-application of the fibrin membranes. This procedure will cover up and protect the graft.
- Fig. 25: check up of the membranes' positioning to verify that they're perfectly stuck on the native bone tissue.
- Fig. 26: suture: although there's the extraction socket, the wound is perfectly closed.
- Fig. 27: placement of the crown with composite material for aesthetic purposes.
- Fig. 28: check-up x-rays after 45 days showing that the bone density is uniform both in the grafted and in the native area.
- Fig. 29: optimal regeneration also on the mucosal level. We can now proceed with the dental impression to prepare the prosthetic crown.

- Fig. 30: Initial X-rays
- Fig. 31: Detachment
- Fig. 32: Detachment
- Fig. 33: Detachment
- Fig. 34: Impacted canine tooth
- Fig. 35: Extraction of impacted canine tooth
- Fig. 36: Post-extraction socket
- Fig. 37: Fibrin block
- Fig. 38: Cavity filling with Combioss
- Fig. 39: Cavity filling with Combioss and CGF
- Fig. 40: Cavity filling with CGF membrane
- Fig. 41: Cavity filling with CGF membrane
- Fig. 42: Stitched wound, covered with serum
- Fig. 43: Stitched wound, covered with serum
- Fig. 44: 3 days after surgery
- Fig. 45: Quality of the tissues after 3 days
- Fig. 46: X-rays after 45 days

Bibliography GBR

1. Albrektsson, T., Brånemark, P.-I., Hansson, H. A. & Lindström, J. (1981) Osseointegrated titanium implants. Requirements for ensuring a longlasting direct bone anchorage in man. *Acta Orthopædica Scandinavica* 52, 155–170.
2. Becker, W., Becker, B., Handelsman, M., Ochsenbein, C. & Albrektsson, T. (1991) Guided tissue regeneration for implants placed into extraction sockets: a study in dogs. *Journal of Periodontology* 62, 703–709.
3. Becker, W., Dahlin, C., Lekholm, U., Bergström, C., van Steenberghe, D., Higuchi, K. & Becker, B. E. (1999) Five-year evaluation of implants placed at extraction and with dehiscences and fenestration defects augmented with ePTFE membranes: results from a prospective multicenter study. *Clinical Implant Dentistry and Related Research* 1, 27–32.
4. Bråneger, U., Hammerle, C. H. F. & Lang, N. P. (1997) Immediate transmucosal implants using the principle of guided tissue regeneration. II. A cross-sectional study comparing the clinical outcome 1 year after immediate to standard implant placement. *Clinical Oral Implants Research* 7, 268–276.
5. Brocard, D., Barthet, P., Baysse, E., Duffort, J. F., Eller, P., Justum, P., Marin, P., Oscaby, F., Simonet, T., Benque, E. & Brunel, G. (2000) A multicenter report on 1,022 consecutively placed ITI implants: a 7-year longitudinal study. *International Journal of Oral and Maxillofacial Implants* 15, 691–700.
6. Brunel, G., Brocard, D., Duffort, J. F., Jacquet, E., Justum, P., Simonet, T. & Benque, E. (2001) Bioabsorbable materials for guided bone regeneration prior to implant placement and 7-year follow-up: report of 14 cases. *Journal of Periodontology* 72, 257–264.
7. Burchardt, H. (1983) The biology of bone graft repair. *Clinical Orthopaedics and Related Research* 174, 28–42.
8. Buser, D., Bråneger, U., Lang, N. P. & Nyman, S. (1990) Regeneration and enlargement of jaw bone using guided tissue regeneration. *Clinical Oral Implants Research* 1, 22–32.
9. Buser, D., Dula, K., Lang, N. P. & Nyman, S. (1996) Long-term stability of osseointegrated implants in bone regenerated with the membrane technique. *Clinical Oral Implants Research* 7, 175–183.
10. Buser, D., Schenk, R. K., Steinemann, S., Fiorellini, J. P., Fox, C. H. & Stich, H. (1991) Influence of surface characteristics on bone integration of titanium implants. A histomorphometric study in miniature pigs. *Journal of Biomedical Materials Research* 25, 889–902.
11. Dahlin, C., Andersson, L. & Linde, A. (1991a) Bone augmentation at fenestrated implants by an osteopromotive membrane technique. A controlled clinical study. *Clinical Oral Implants Research* 2, 159–165.
12. Dahlin, C., Lekholm, U. & Linde, A. (1991b) Membrane-induced bone augmentation at titanium implants. A report on ten fixtures followed from 1 to 3 years after loading. *International Journal of Periodontics and Restorative Dentistry* 4, 273–281.
13. Dahlin, C., Linde, A., Gottlow, J. & Nyman, S. (1988) Healing of bone defects by guided tissue regeneration. *Plastic and Reconstructive Surgery* 81, 672–677.
14. Dahlin, C., Sennerby, L., Lekholm, U., Linde, A. & Nyman, S. (1989) Generation of new bone around titanium implants using a membrane technique: An experimental study in rabbits. *International Journal of Oral and Maxillofacial Implants* 4, 19–25.
15. Deporter, D. A., Watson, P. A., Pilliar, R. M., Chipman, M. L. & Valiquette, N. (1990) A histological comparison in the dog of porouscoated vs. threaded dental implants. *Journal of Dental Research* 69, 1138–1145.
16. Ericsson, I., & Johansson, C. B., Bystedt, H. & Norton, M. R. (1994) A histomorphometric evaluation of bone-to-implant contact on machine-prepared and roughened titanium dental implants. *Clinical Oral Implants Research* 5, 202–206.
17. Fugazzotto, P. A. (1997) Success and failure rates of osseointegrated implants in function in regenerated bone for 6–51 months: a preliminary report. *International Journal of Oral and Maxillofacial Implants* 12, 17–24.
18. Gottlander, M. & Albrektsson, T. (1991) Histomorphometric studies of hydroxylapatitecoated and uncoated CP titanium threaded implants in bone. *International Journal of Oral and Maxillofacial Implants* 6, 399–404.

19. Hammerle, C. H. F., Brägger, U., Schmid, B. & Lang, N. P. (1998) Successful bone formation at immediate transmucosal implants. *International Journal of Oral and Maxillofacial Implants* 13, 522–530.
20. Hammerle, C. H. F. & Hellem, S. (1999) Consensus report on session. In: Lindhe, J. & Karring, L., eds. 3rd European Workshop on Periodontology, Ittingen: Quintessence.
21. Hammerle, C. H. F., Olah, A. J., Schmid, J., Flückiger, L., Winkler, J. R., Gogolowski, S. & Lang, N. P. (1997) The biological effect of deproteinized bovine bone on bone neoformation on the rabbit skull. *Clinical Oral Implants Research* 8, 198–207.
22. Hammerle, C. H. F., Schmid, J., Olah, A. J. & Lang, N. P. (1996) A novel model system for the study of experimental bone formation in humans. *Clinical Oral Implants Research* 7, 38–47.
23. Ilizarov, G. A. (1989a) The tension-stress effect on the genesis and growth of tissues: Part I. The influence of stability of fixation and soft tissue preservation. *Clinical Orthopaedics* 238, 249–281.
24. Ilizarov, G. A. (1989b) The tension-stress effect on the genesis and growth of tissues: Part II. The influence of the rate and frequency of distraction. *Clinical Orthopaedics* 239, 263–285.
25. Kostopoulos, L. & Karring, T. (1994) Augmentation of the rat mandible using guided tissue regeneration. *Clinical Oral Implants Research* 5, 75–82.
26. Kostopoulos, L., Karring, T. & Uraguchi, R. (1994) Formation of jawbone tuberosities by guided tissue regeneration. An experimental study in the rat. *Clinical Oral Implants Research* 5, 245–253.
27. Lang, N. P., Hammerle, C. H. F., Brägger, U., Lehmann, B. & Nyman, S. R. (1994) Guided tissue regeneration in jawbone defects prior to implant placement. *Clinical Oral Implants Research* 5, 92–97.
28. Lekholm, U., Adell, R. & Lindhe, J. (1986) Marginal tissue reactions at osseointegrated titanium fixtures. (II) A cross-sectional retrospective study. *International Journal of Oral and Maxillofacial Surgery* 15, 53–61.
29. Lorenzoni, M., Pertl, C., Polansky, R. & Wegscheider, W. (1999) Guided bone regeneration with barrier membranes – a clinical and radiographic follow-up study after 24 months. *Clinical Oral Implants Research* 10, 16–23.
30. Mayfield, L., Skoglund, A., Nobreus, N. & Attström, R. (1998) Clinical and radiographic evaluation, following delivery of fixed reconstructions, at GBR treated titanium fixtures. *Clinical Oral Implants Research* 9, 292–302.
31. Nevins, M., Mellonig, J. T., Clem, D. S., Reiser, G. M. & Buser, D. A. (1998) Implants in regenerated bone: Long-term survival. *International Journal of Periodontics and Restorative Dentistry* 18, 35–45.
32. Nyman, S. R. & Lang, N. P. (1994) Guided tissue regeneration and dental implants. In: Lang, N. P. & Nyman, S., eds. *Periodontology 2000*, pp. 109–118. Copenhagen: Munksgaard.
33. Nyman, S., Lang, N. P., Buser, D. & Brägger, U. (1990) Bone regeneration adjacent to titanium dental implants using guided tissue regeneration. A report of 2 cases. *International Journal of Oral and Maxillofacial Implants* 5, 9–14.
34. Reddi, A. H., Weintraub, S. & Muthukumaran, N. (1987) Biologic principles of bone induction. *Orthopedic Clinics of North America* 18, 207–212.
35. Simion, M., Jovanovic, S. A., Tinti, C. & Benfenati, S. P. (2001) Long-term evaluation of osseointegrated implants inserted at the time or after vertical ridge augmentation. A retrospective study on 123 implants with 1–5 year follow-up. *Clinical Oral Implants Research* 12, 35–45.
36. Urist, M. R. (1965) Bone: Formation by autoinduction. *Science* 150, 893–899.
37. Wilke, H.-J., Claes, L. & Steinman, S. (1990) The influence of various titanium surfaces on the interface shear strength between implants and bone. *Clinical Implant Materials* 9, 309–315.
38. Zitzmann, N. U., Schärer, P. & Marinello, C. P. (2001) Long-term results of implants treated with guided bone regeneration: a 5-year prospective study. *International Journal of Oral and Maxillofacial Surgery* 16, 355–366.
40. M. Corigliano, L. Sacco, S. Caputi, L. Ciavarelli: Rigenerazione Tessutale guidata in chirurgia odontostomatologica. Atti VI Congresso di Discipline

Odontostomatologiche. Francavilla al Mare, Sporting Hotel Villa Maria, 29-30 Aprile 1994; 299- 304.

41. Sacco L., Corigliano M., Caputi S.: "La rigenerazione tessutale guidata mediante l'uso delle membrane riassorbibili: un caso clinico". Atti I Congresso Nazionale dei Docenti di Odontoiatria. 1994; 3: 2283-2290.

42. Piattelli A, Scarano A, Corigliano M, Piattelli M: "Alkaline phosphatase increases the bone formation around titanium implants". 74th General Session of the International Association for Dental Research (I.A.D.R.), San Francisco, March 13-17, 1996; 75:80 (abst.501).

43. Corigliano M, Sacco L, Scarano A, Piattelli A, Quaranta M: "Alkaline phosphatase changes the bone growth patterns around plasma-sprayed titanium implants". 74th General Session of the International Association for Dental Research (I.A.D.R.), San Francisco, March 13-17, 1996;75:76 (abst.472)

44. L.Sacco,A.Scarano,M.Corigliano,M.Piattelli, Di Alberti L Simultaneous demonstration of alkaline and acid phosphatases activities in plastic embedded undemineralized tissues. 3rd CED/NOF Joint Meeting, September 12-15, 1996, Berlin.

45. Piattelli A, Scarano A, Corigliano M: "A comparison of bone regeneration with the use of mineralized (FDBA) and demineralized freeze-dried bone allografts (DFDBA): a histologic and histochemical study in man". Biomaterials 1996;17(11):1127-1131.

46. Sacco L., Scarano A., Corigliano M., Piattelli M., Di Alberti L., Piattelli A. " Bone reabsorption in monkeys" 76th General Session of the International Association of dental Research (IADR)- Nizza- 24-27/6/1998. J.Dent. Res. Abstr.

47. Scarano A, Piattelli M, Corigliano M, Di Alberti L, Piattelli A: Histologic comparison between mineralized and demineralized freeze-dried bone allografts in man.3rd CED/NOF Joint Meeting, September 12-15, 1996, Berlin.

Implant early and immediate loading

- 1) Corigliano M., Scarano A., Piattelli A.: "Removal torque and histological analysis of bone around early loaded implants". 32nd Meeting of the Continental European Division of the International Association of Dental Research. Ljubljana, Slovenia, September 15-16 1995
- 2) Corigliano M, Quaranta M, Scarano A, Piattelli: Bone reaction to early loaded Plasma-Sprayed Titanium Implant. 73 General Session I.A.D.R Singapore 1995. Journal of Dental Research. Vol 74; Special Issue; Abstract of Paper n 275 pag 435.
- 3) Piattelli A., Favero G.A., Scarano A., Corigliano M: "Dalla ricerca alla clinica in osteointegrazione". Edizioni Martina Bologna 1996
- 4) Piattelli A., Corigliano M., Scarano A. " Microscopical observations of the osseous responses in early load human titanium implant: a report of two cases. Biomaterials. 1996 Jul; 17 (13): 1333-7
- 5) Favero G.A, Corigliano M, Scarano A, Piattelli A, Piattelli M: "Bone formation around sandblasted and plasma-sprayed titanium implants in connection with the use of alkaline phosphatase: a pilot study". Meeting of the European Association for Osseointegration Paris. February 9-11, 1996.
- 6) Piattelli A, Scarano A, Corigliano M, Piattelli M: "Alkaline phosphatase increases the bone formation around titanium implants". 74th General Session of the International Association for Dental Research (I.A.D.R.), San Francisco, March 13-17, 1996; 75:80 (abst.501).
- 7) Tamborrino F, Piattelli A, Scarano A, Corigliano M, Piattelli M: "Multinucleated giant cells around smooth, sandblasted and plasma-sprayed titanium implants". 74th General Session of the International Association for Dental Research (I.A.D.R.), San Francisco, March 13-17, 1996; 75:80 (abst. 504).
- 8) Piattelli A, Scarano A, Corigliano M, Piattelli M: "Alkaline phosphatase activity in osteoblasts around hydroxyapatite-coated and titanium implants in rabbit". 74th General Session of the International Association for Dental Research (I.A.D.R.), San Francisco, March 13-17, 1996; 75:80 (abst 503).
- 9) Corigliano M, Sacco L, Scarano A, Piattelli A, Quaranta M: "Alkaline phosphatase changes the bone growth patterns around plasma-sprayed titanium implants". 74th General Session of the International Association for Dental Research (I.A.D.R.), San Francisco, March 13-17, 1996;75:76 (abst.472)
- 10) Corigliano M, Costigliola G, Scarano A, Quaranta M, Piattelli A: "Histologic evaluation of supracrestal tissues around early loaded implants in monkeys". 74th General Session of the International Association for Dental Research (I.A.D.R.), San Francisco, March 13-17, 1996;75:75 (abst. 353).
- 11) D'Addona A, Piattelli M, Scarano A, Corigliano M, Piattelli A, Quaranta M: "Histologic analysis of 183 implants retrieved over a 7 years period". 74th General Session of the International Association for Dental Research (I.A.D.R.), San Francisco, March 13-17, 1996 ; 75:181 (abst.1306).
- 12) Corigliano M, Scarano A, Piattelli M, Di Alberti L, Piattelli A: An histologic and histochemical analysis of acid and alkaline phosphatases around hydroxyapatite-coated implants. 3rd CED/NOF Joint Meeting, September 12-15, 1996, Berlin.
- 13) Corigliano M, Piattelli A, Scarano A: Microscopical observations of the osseous responses in early loaded human titanium implants: a report of two cases. Biomaterials 1996;17(13):1133-1137.
- 14) Corigliano M, Piattelli A, Scarano A, Piattelli M: Presence of multinucleated giant cells (MGCs) around machined, sandblasted, and plasma-sprayed titanium implants: a histological and histochemical time course study in rabbit. Biomaterials 1996, vol 17 (21) 2053-8
- 15) Piattelli A, Corigliano M, Piattelli M, Scarano A: Effect of alkaline phosphatase on bone healing around plasma-sprayed titanium implants: a pilot study in rabbit. Biomaterials, 1996 vol 17 (14): 1443-9
- 16) Corigliano M., Scarano A., Costigliola G., Piattelli A.: " Histologic evaluation of immediately loaded dental implant in monkeys" 75th General Session of the International

Association for dental Research (IADR)- Orlando 19-23/7 1997 J.Dent.Res. Abstr.562:-76:84 -1997

17) Piattelli A, Paolantonio M, Corigliano M., Scarano A.,: " Immediate loading of titanium plasma-sprayed screw-shaped implants in man: a clinical and histological report of two cases. 1997; J Periodontal; 68: 591-597.

18) Piattelli A., Corigliano M., Scarano A., Quaranta M.,: " Bone reactions to early occlusal loading of two-stage titanium plasma sprayed implants: a pilot study in monkeys. Int J Periodont Rest.Dent; 1997 Apr; 17 (2):162-169

19) Sacco L., Scarano A., Corigliano M., Paolantonio M., Piattelli A.," A microscopical analysis of immediately loaded implant in man." 75th General Session of the International Association of dental Research (IADR) - Orlando- 19-23/7 1997. J.Dent. Res. Abstr. 577-76 pag. 86.

20) Piattelli A., Paolantonio M., Corigliano M., Scarano A.,: " Immediate loading of titanium plasma-sprayed screw-shaped implant in man: a clinical and histological report of two cases." J. Periodontol. 1997 Jun; 68 (6) : 591-7

21) Sacco L., Scarano A., Corigliano M., Piattelli M., Di Alberti L., Piattelli A. " Bone reabsorption in monkeys" 76th General Session of the International Association of dental Research (IADR)- Nizza- 24-27/6/1998. J.Dent. Res. Abstr.

22) Corigliano M, Scarano A, Costigliola G, Paolantonio M.: Immediate Loading of Titanium Plasma-sprayed implants: an Histologic Analysis in Monkeys. J. of Periodontology ; 1998, volume 69, n°3 :321-327

23) Piattelli A ,Corigliano M, Scarano A, Costigliola G, Paolantonio M.: "Immediate loading of titanium plasma sprayed implants: a pilot study in monkeys". J. Periodontol. Mar; 69: 321-327

24) Scarano A.,Iezzi G., Petrone G., Marino V.C., Corigliano M., Piattelli A. "Immediate postextarction implant: a histologic and histometric analysis in monkeys". J.Oral Implantol.2000; 26 (3): 163-9.

Bibliography DCCM

Corigliano M., Puzzilli D., Pagliai F., " Una proposta terapeutica per i disturbi Cranio-Cervico-Mandibolari" Dentista Moderno, Gennaio 2001;51-57

ROP – TMI

- 1) Corigliano M., Cammarata L., Porro G., Baldoni E., " La necrosi ossea perimplantare, come viene prodotta e come evitarla- Parte 1°. Implantologia dentale 3,4, 153-160 (2006)
- 2) Corigliano M., Cammarata L., Porro G., Baldoni E., " La necrosi ossea perimplantare, come viene prodotta e come evitarla- Parte 2°. Implantologia dentale 3,5, 240-245 (2006)
- 3) Corigliano M., Barlattani A., Gargari M., Ottria L., Andreana S. "Primary Healing in Oral implantology" 37th Annual meeting of the Continental European Division of the IADR. 5-8 September 2001, Rome. Abs 267 pag.193
- 4) Demofonte F.,Corigliano M.,Barlattani A.,Gargari M., Ottria L. " Immediate load in implants inserted with flap-less surgery" 37th Annual meeting of the Continental European Division of the IADR. 5-8 September 2001, Rome. Abs.270 pag. 195
- 5) Corigliano M., Gargari M., Ottria L., Barlattani A. " Early load on Bone Primary Healing Implants"37th Annual meeting of the Continental European Division of the IADR. 5-8 september 2001, Rome. Abs.271 pag. 195
- 6) Ottria L., Corigliano M., Barlattani A., Gargari M., Andrana S." Immediate implant placement and Bone Primary Healing. In vivo study."37th Annual meeting of the Continental European Division of the IADR. 5-8 september 2001, Rome. Abs 273 pag.196

- 7) De Santis N., Corigliano M., Barlattani A., Gargari M., Ottria L. Dolci A. " TMI, a new root form system oral implant" 37th Annual meeting of the Continental European Division of the IADR. 5-8 september 2001, Rome. ABS 274 pag.197
- 8) Corigliano M.,Barlattani A.,Gargari M.,Ottria L.,Andreana S. " La riparazione Ossea Primaria (ROP) in implantoprotesi; possibilità, tecnica ed applicazioni. Quint.Internazionale 2002, 9/10;359-370
- 9) Corigliano M., Barlattani A.,: " Problematiche ed insuccessi in implantoprotesi" atti del 4°Congresso Internazionale AISI. Verona 18-19 ottobre2002; 185-212
- 10)Corigliano M., Marinotti F., De Santis N., Barlattani A.: "Il titanio in odontoiatria protesica: caratteristiche fisico-chimiche e tecniche di lavorazione." Implantologia 2004;3: 243-253
- 11)Tamburri F., Sanchez L., Allasia L., Bucci sabattini V., Lotta C., Porro G., Zucco E., Barlattani A., Corigliano M.: " Valutazione e statistica a 6 anni della protesi radicolare osteoconnessa TMI a Riparazione ossea Primaria (ROP)- Parte 1. Implantologia Dentale 2,3,132-141 (2005)
- 12)Tamburri F., Sanchez L., Allasia L., Bucci sabattini V., Lotta C., Porro G., Zucco E., Barlattani A., Corigliano M.: " Valutazione e statistica a 6 anni della protesi radicolare osteoconnessa TMI a Riparazione ossea Primaria (ROP)- Parte 2. Implantologia Dentale, 2,4, 196-204 (2005)
- 13)Baldoni E., Corigliano M., Porro G., Cammarata L., Armellin E. " le protesi Radicolari a Riparazione Ossea Primaria (ROP) – parte 1) implantologia Dentale 3,2, 2006. 50-58
- 14)Baldoni E., Corigliano M., Porro G., Cammarata L., Armellin E. " le protesi Radicolari a Riparazione Ossea Primaria (ROP) – parte 2) implantologia Dentale 3,3, 2006. 100-106
- 15)Corigliano M., Cammarata L., Porro G., Baldoni E., " La necrosi ossea perimplantare, come viene prodotta e come evitarla- Parte 1°. Implantologia dentale 3,4, 153-160 (2006)
- 16)Corigliano M., Cammarata L., Porro G., Baldoni E., " La necrosi ossea perimplantare, come viene prodotta e come evitarla- Parte 2°. Implantologia dentale 3,5, 240-245 (2006)
- 17)Corigliano M., Bevilacqua M., Sforzino P., Baldoni E., " La sindrome compartimentale in odontoiatria - Parte 1 – Implantologia Dentale 4,1,20-29 (2007)
- 18)Corigliano M., Cammarata L. Porro G., Baldoni E.: "Avoiding Alveolar Nerve Technique (AANT): possibilità terapeutiche" Implantologia 2007;2:7-13
- 19)Corigliano M., Bevilacqua M., Sforzino P., Baldoni E., " La sindrome compartimentale in odontoiatria - Parte II – Implantologia Dentale 4,2,78-83 (2007)
- 20)Corigliano M., Puzzilli D., Pilloni A., Baldoni E. " La disgiunzione crestale FBET in implantoprosi: valutazioni e limiti (parte 1). Implantologia Dentale 4,3, 124-128 (2007)
- 21)M. Corigliano L.Cammarata,M.Mantarro 2° Convegno Nazionale Societa' Italiana Biofisica Elettrodinamica – Bologna, 21 Aprile 2007 "La terapia magneto elettrica nel corso post-operatorio implantoprotesico"
- 22)Corigliano M., Puzzilli D., Pilloni A., Baldoni E. " La disgiunzione crestale FBET in implantoprosi: valutazioni e limiti (parte 2). Implantologia Dentale . Settembre, 160-164 (2008)

Bibliography PRF

1. Robert M. Berne, Matthew N. Levy. Ili edizione italiana. Casa Editrice Ambrosiana.
2. Gible JW, Ness PM. Fibrin glue: the perfect operative sealant? Transfusion 1990;30:741-7.
3. Saltz R, Sierra D, Feldman D, Saltz MB, Dimick A, Vasconez LO. Experimental and clinical applications of fibrin glue. Plast Reconstr Surg 1991;88:1005-15, discussion 1016-7.
4. Hotz G. Alveolar ridge augmentation with hydroxylapatite using fibrin sealant for fixation. Part I: An experimental study. Int J Orai Maxillofac Surg 1991;20:204-7.
5. Hotz G. Alveolar ridge augmentation with hydroxylapatite using fibrin sealant for fixation. Part II: Clinical application. Int J Orai Maxillofac Surg 1991;20:208-13.
6. Bonucci E, Marini E, Valdinucci F, Fortunato G. Osteogenic response to hydroxyapatite-fibrin implants in maxillofacial bone defects. Eur J Orai Sci

- 1997;105:557-61
7. Matras H. Fibrin sealant in maxillofacial surgery. Development and indications. A review of the past 12 years. *Facial Plast Surg* 1985;2:297-313.
8. Matras H. Fibrin seal: the state of the art. *J Orai Maxillofac Surg* 1985;43:605-11.
9. Soffer E, Ouhayoun JP, Anagnostou F. Fibrin sealants and platelet preparations in bone and periodontal healing. *Orai Surg Orai Med Orai Pathol Orai Radiol Endod* 2003;95:521-8.
10. Dugrillon A, Eichler H, Kern S, Kluter H. Autologous concentrated platelet-rich plasma (cPRP) for local application in bone regeneration. *Int J Orai Maxillofac Surg* 2002;31:615-9. Anitua E. The use of plasma-rich growth factors (PRGF) in orai surgery. *Pract Proced Aesthet Dent* 2001;13:487-93.
11. Weibrich G, Kleis WK, Hafner G, Hitzler WE, Wagner W. Comparison of platelet, leukocyte, and growth factor levels in point-of-care platelet-enriched plasma, prepared using a modified Curasan kit, with preparations received from a local blood bank. *Clin Orai Implants Res* 2003;14:357-62.
12. Arpornmaekiong P, Kochel M, Depprich R, Kubler NR, Wurzier KK. Influence of platelet-rich plasma (PRP) on osteogenic differentiation of rat bone marrow stromal cells. An in vitro study. *Int J Orai Maxillofac Surg* 2004;33:60-70.
13. Carter CA, Jolly DG, Worden CE Sr, Hendren DG, Kane CJ. Platelet-rich plasma gel promotes differentiation and regeneration during equine wound healing. *Exp Mol Pathol* 2003;74:244-55.
14. Yamada Y, Ueda M, Hibi H, Nagasaka T. Translational research for injectable tissue-engineered bone regeneration using mesenchymal stem cells and platelet-rich plasma: from basic research to clinical case study. *Celi Transplant* 2004;13:343-55.
15. Yamada Y, Ueda M, Naiki T, Takahashi M, Hata K, Nagasaka T. Autologous injectable bone for regeneration with mesenchymal stem cells and platelet-rich plasma: tissue-engineered bone regeneration. *Tissue Eng*, 2004. 10(5-6): p. 955-64.
16. Sonnleitner D, Huemer P, Sullivan DY. A simplified technique for producing platelet-rich plasma and platelet concentrate for intraoral bone grafting techniques: a technical note. *Int J Orai Maxillofac Implants* 2000;15:879-82.
17. Demiralp B, Keceli HG, Muhtarogullar M, Serper A, Eratalay K. Treatment of periapical inflammatory lesion with the combination of platelet-rich plasma and tricalcium phosphate: a case report. *J Endod* 2004;30:796-800.
18. Efeoglu C, Akcay YD, Erturk S. A modified method for preparing platelet-rich plasma: an experimental study. *J Orai Maxillofac Surg* 2004;62:1403-7.
19. Fennis JP, Stoelinga PJ, Jansen JA. Mandibular reconstruction: a clinical and radiographic animal study on the use of autologous scaffolds and platelet-rich plasma. *Int J Orai Maxillofac Surg* 2002;31:281-6.
20. Fennis JP, Stoelinga PJ, Jansen JA. Mandibular reconstruction: a histological and histomorphometric study on the use of autologous scaffolds, particulate cortico-cancellous bone grafts and platelet rich plasma in goats. *Int J Orai Maxillofac Surg* 2004;33:48-55.
21. Fennis JP, Stoelinga PJ, Jansen JA. Reconstruction of the mandible with an autologous irradiated cortical scaffold, autologous corticocancellous bone-graft and autologous platelet-rich plasma: an animal experiment. *Int J Orai Maxillofac Surg* 2005; 34:158-66.
22. Floryan KM, Berghoff WJ. Intraoperative use of autologous platelet-rich and platelet-poor plasma for orthopedic surgery patients. *Aorn J* 2004;80:668-74, quiz 675-8.
23. Fontana S, Olmedo DG, Linares JA, Guglielmotti MB, Crosa ME. Effect of platelet-rich plasma on the peri-implant bone response: an experimental study. *Implant Dent* 2004;13:73-8.
24. Grageda E. Platelet-rich plasma and bone graft materials: a review and a standardized research protocol. *Implant Dent* 2004;13:301-9.
25. Kitoh H, Kitakoji T, Tsuchiya H, Mitsuyama H, Nakamura H, Katoh M, Ishiguro N. Transplantation of marrow-derived mesenchymal stem cells and platelet-rich plasma during distraction osteogenesis—a preliminary result of three cases. *Bone* 2004; 35:892-8.
26. Kovacs K, Velich N, Huszar T, Fenyves B, Suba Z, Szabo G. Histomorphometric and

- densitometric evaluation of the effects of platelet-rich plasma on the remodeling of beta-tricalcium phosphate in beagle dogs. *J Craniofac Surg* 2005;16:150-4. Mazor Z, Peleg M, Garg AK, Luboshitz J. Platelet-rich plasma for bone graft enhancement in sinus floor augmentation with simultaneous implant placement: patient series study. *Implant Dent* 2004;13:65-72.
27. Merckx MA, Fennis JP, Verhagen CM, Stoelinga PJ. Reconstruction of the mandible using preshaped 2.3 mm titanium plates, autologous particulate cortico-cancellous bone grafts and platelet rich plasma: a report on eight patients. *Int J Orai Maxillofac Surg* 2004;33:733-9.
 28. Oyama T, Nishimoto S, Tsugawa T, Shimizu F. Efficacy of platelet-rich plasma in alveolar bone grafting. *J Orai Maxillofac Surg* 2004;62:555-8.
 29. Oyama T, Nishimoto S, Takeda M. Alveolar bone regeneration utilizing b-TCP and platelet-rich plasma (PRP) derived from bone marrow aspirate. *Ann Plast Surg* 2005;54:222.
 30. Roldan JC, Jepsen S, Schmidt C, Knuppel H, Rueger DC, Acil Y, Terheyden H. Sinus floor augmentation with simultaneous placement of dentai implants in the presence of platelet-rich plasma or recombinant human bone morphogenetic protein-7. *Clin Orai Implants Res* 2004;15:716-23.
 31. Roldan JC, Jepsen S, Miller J, Freitag S, Rueger DC, Acil Y, Terheyden H. Bone formation in the presence of platelet-rich plasma vs. bone morphogenetic protein-7. *Bone* 2004;34:80-90.
 32. Suba Z, Takacs D, Gyulai-Gaal S, Kovacs K. Facilitation of betatricalcium phosphateeinduced alveolar bone regeneration by platelet-rich plasma in beagle dogs: a histologic and histomorphometric study. *Int J Orai Maxillofac Implants* 2004;19:832-8.
 33. Yazawa M, Ogata H, Nakajima T, Mori T, Watanabe N, Handa M. Basic studies on the clinical applications of platelet-rich plasma. *Celi Transplant* 2003;12:509-18.
 34. Yazawa M, Ogata H, Nakajima T, Watanabe N. Influence of antiplatelet substances on platelet-rich plasma. *J Orai Maxillofac Surg* 2004;62:714-8.
 35. Yazawa M, Ogata H, Kimura A, Nakajima T, Mori T, Watanabe N. Basic studies on the bone formation ability by platelet rich plasma in rabbits. *J Craniofac Surg* 2004;15:439-46.
 36. D. Dohan a,* , A. Diss b. Report of the 2nd International Symposium on growth Factors (SyFac 2005) *Implantodontie* 14 (2005) 116-125.
 37. Antonaides HN, Williams LT. Human platelet-derived growth factor: Structure and functions. *Federation Proc* 1983; 42:2630-2634.
 38. Anitua E. Un Nuevo Enfoque en la regeneracio Osea. *Plasma Rico en Factores de Crecimiento (P.R.G.F.)*. Puesta al Dia Publicaciones, S.L., 2000.
 39. Anitua E. PRGF obtention in dentai offices. Presented at the Fifteenth Annual Meeting of the Accademy of Osseointegration. March 9-10, 2000. New Orleans, LA.
 40. D. M. Dohan, J. Choukroun, A. Diss, S. L. Dohan, A. J. J. Dohan, J. Mouhyi, B. Gogly. Platelet-rich fibrin (PRF): A second-generation platelet concentrate.
 41. Part I: Technological concepts and evolution. *Orai Surg Orai Med Orai Pathol Orai Radiol Endod* 2006; 101 :E37-44.
 42. D. M. Dohan, J. Choukroun, A. Diss, S. L. Dohan, A. 1 J. Dohan, 3. Mouhyi, B. Gogly. Platelet-rich fibrin (PRF): A second-generation platelet concentrate.
 43. Part II: Platelet-related biologie features. *Orai Surg Orai Med Orai Pathol Orai Radiol Endod* 2006;101:E45-50
 44. D. M. Dohan, J. Choukroun, A. Diss, S. L. Dohan, A. J. J. Dohan, J. Mouhyi, B. Gogly. Platelet-rich fibrin (PRF): A second-generation platelet concentrate.
 45. Part III: Leucocyte activation: A new feature for platelet concentrates? *Orai Surg Orai Med Orai Pathol Orai Radiol Endod* 2006; 101:E51-5.
 46. J. Choukroun, A. Diss, A. Simonpieri, M. O. Girard, C. Schoeffler, S. L. Dohan, A. 3. J. Dohan, J. Mouhyi, D. M. Dohan. Platelet-rich fibrin (PRF): A second-generation platelet concentrate.
 47. Part IV: Clinical effects on tissue healing. *Orai Surg Orai Med Orai Pathol Orai Radiol Endod* 2006; 101:E56-60.

48. J. Choukroun, A. Diss, A. Simonpieri, M. O. Girard, C. Schoeffler, S. L. Dohan, A. J. J. Dohan, J. Mouhyi, D. M. Dohan. Platelet-rich fibrin (PRF): A second-generation platelet concentrate. Part V: Histologic evaluations of PRF effects on bone allograft maturation in sinus lift. *Orai Surg Orai Med Orai Pathol Orai Radiol Endod* 2006; 101:299-303.
- A. Simonpieri, C. Schoeffler, M. O. Girard, A. Diss, D. Dohan. Le Platelet Rich Fibrin - PRF biomatériau de cicatrisation performant. *L'Information Dentarie* 2005; 87(14):803.
49. Simonpieri, D. Dohan. Intérêt du PRF pour les rehabilitations bimaxillaires complexes avec greffes osseuses multiples, implantations postextractionnelles et mise en charge immédiate. Présentation d'un cas clinique. *Implantodontie* 2005. Volume 11 - Numéro 1.
50. Dohan D, Donsimoni J-M, Navarro G, Gaultier F. [Platelet concentrates. Part 1: Technologies.] *Implantodontie* 2003;12:5-16. French.
51. Dohan D, Donsimoni J-M, Navarro G, Gaultier F. [Platelet concentrates. Part 2: Associated biology.] *Implantodontie* 2003; 12: 17-25. French.
52. Gaultier F, Navarro G, Donsimoni J-M, Dohan D. [Platelet concentrates. Part 3: Clinical applications.] *Implantodontie* 2004;13: 3-11. French.
53. Mosesson MW, Siebenlist KR, Meh DA. The structure and biological features of fibrinogen and fibrin. *Ann N Y Acad Sci* 2001;936:11-30.
54. Clark RA. Fibrin and wound healing. *Ann N Y Acad Sci* 2001; 936:355-67.
55. Giannobile WV, Hernandez RA, Finkelman RD, Ryan S, Kiritsy CP, D'Andrea M, Lynch SE. Comparative effects of platelet-derived growth factor-BB and insulin-like growth factor-I, individually and in combination, on periodontal regeneration in *Macaca fascicularis*. *J Periodontal Res* 1996;31:301-12.
56. Border WA, Noble NA. Transforming growth factor beta in tissue fibrosis. *N Engl J Med* 1994;331:1286-92.
57. Rosenkranz S, Kazlauskas A. Evidence for distinct signalling properties and biological responses induced by the PDGF receptor alpha and beta subtypes. *Growth Factors* 1999;16:201-16.
58. Lucarelli E, Beccheroni A, Donati D, Sangiorgi L, Cenacchi A, Del Vento AM, et al. Platelet-derived growth factors enhance proliferation of human stromal stem cells. *Biomaterials* 2003; 24:3095-100.
59. Heldin CH. Simultaneous induction of stimulatory and inhibitory signals by PDGF. *FEBS Lett* 1997;410:17-21.
60. Yu J, Ustach C, Kim HR. Platelet-derived growth factor signalling and human cancer. *J Biochem Mol Biol* 2003;36:49-59.
61. Winkler R, Pasleau F, Boussif N, Hodzic D. The IGF system: summary and recent data. *Rev Med Liege* 2000;55:725-39.
62. Butt A3, Firth SM, Baxter RC. The IGF axis and programmed cell death. *Immunol Cell Biol* 1999;77:256-62.
63. Weibrich G, Kleis WK, Hafner G, Hitzier WE. Growth factor levels in platelet-rich plasma and correlations with donor age, sex, and platelet count. *J Craniomaxillofac Surg* 2002;30:97-102.
64. Weibrich G, Kleis WK, Hafner G. Growth factor levels in the platelet-rich plasma produced by 2 different methods: Curasantype PRP kit versus PCCS PRP system. *Int J Orai Maxillofac Implants* 2002;17:184-90.
65. Zimmermann R, Jakubietz R, Jakubietz M, Strasser E, Schlegel A, Wiltfang J, Eckstein R. Different preparation methods to obtain platelet components as a source of growth factors for local application. *Transfusion* 2001;41:1217-24.
66. Weibrich G, Kleis WK, Buch R, Hitzier WE, Hafner G. The Harvest SmartPREP system versus the Friadent-Schutze platelet-rich plasma kit. *Clin Orai Implants Res* 2003;14:233-9.
67. Simonpieri A, Choukroun J, Girard MO, Ouaknine T, Dohan D. [Immediate post-extraction implantation: interest of the PRF.] *Implantodontie* 2004;13:177-89. French.
68. Gaultier F, Navarro G, Donsimoni J-M, Dohan D. [Platelet concentrates. Part 3: Clinical applications.] *Implantodontie* 2004;13: 3-11. French.
69. Aggarwal BB, Shishodia S, Ashikawa K, Bharti AC. The role of TNF and its family

- members in inflammation and cancer: lessons from gene deletion. *Curr Drug Targets Inflamm Allergy* 2002; 1: 327-41.
70. Aggarwal BB. Signalling pathways of the TNF superfamily: a double-edged sword. *Nat Rev Immunol* 2003;3:745-56.
 71. Gaur U, Aggarwal BB. Regulation of proliferation, survival and apoptosis by members of the TNF superfamily. *Biochem Pharmacol* 2003;66:1403-8.
 72. Dinarello CA. The IL-1 family and inflammatory diseases. *Clin Exp Rheumatol* 2002;20(5 Suppl 27):S1-13.
 73. Rosenwasser U. Biologic activities of IL-1 and its role in human disease. *J Allergy Clin Immunol* 1998;102:344-50.
 74. Dinarello CA. Therapeutic strategies to reduce IL-1 activity in treating local and systemic inflammation. *Curr Opin Pharmacol* 2004;4:378-85.
 75. Kwan Tat S, Padrines M, Theoleyre S, Heymann D, Fortun Y. IL-6, RANKL, TNF-alpha/IL-1: interrelations in bone resorption pathophysiology. *Cytokine Growth Factor Rev* 2004;15:49-60.
 76. Tiggelman AM, Boers W, Linthorst C, Brand HS, Sala M, Chamuleau RA. Interleukin-6 production by human liver (myo) fibroblasts in culture. Evidence for a regulatory role of LPS, IL-1 beta and TNF alpha. *J Hepatol* 1995;23:295-306.
 77. Kamimura D, Ishihara K, Hirano T. IL-6 signal transduction and its physiological roles: the signal orchestration model. *Rev Physiol Biochem Pharmacol* 2003;149:1-38.
 78. Heinrich PC, Behrmann I, Haan S, Hermanns HM, Muller-Newen G, Schaper F. Principles of interleukin (IL)-6-type cytokine signalling and its regulation. *Biochem J* 2003;374(Pt 1):1-20.
 79. Nishimoto N, Kishimoto T. Inhibition of IL-6 for the treatment of inflammatory diseases. *Curr Opin Pharmacol* 2004;4:386-91.
 80. Boothby NI, Mora AL, Aronica MA, Youn J, Sheller JR, Goenka S, Stephenson L. IL-4 signaling, gene transcription regulation, and the control of effector T cells. *Immunol Res* 2001;23:179-91.
 81. Keegan AD, Zamorano J. Regulation of gene expression, growth, and cell survival by IL-4: contribution of multiple signaling pathways. *Cell Res* 1998;8:1-13.
 82. Kay NE, Pittner BT. IL-4 biology: impact on normal and leukemic CLL B cells. *Leuk Lymphoma* 2003;44:897-903.
 83. Tiggelman AM, Boers W, Linthorst C, Sala M, Chamuleau RA. Collagen synthesis by human liver (myo)fibroblasts in culture: evidence for a regulatory role of IL-1 beta, IL-4, TGF beta and IFN gamma. *J Hepatol* 1995;23:307-17.
 84. Li-Weber M, Laur O, Davydov I, Hu C, Salgame P, Krammer PH. What controls tissue-specific expression of the IL-4 gene? *Immunobiology* 1997;198:170-8.
 85. Brown MA, Hural J. Functions of IL-4 and control of its expression. *Crit Rev Immunol* 1997;17:1-32.
 86. Zachary I. VEGF signalling: integration and multi-tasking in endothelial cell biology. *Biochem Soc Trans* 2003;31(Pt 6): 1171-7.
 87. Harry LE, Paleolog EM. From the cradle to the clinic: VEGF in developmental, physiological, and pathological angiogenesis. *Birth Defects Res Part C Embryo Today* 2003;69:363-74.
 88. Ruhrberg C. Growing and shaping the vascular tree: multiple roles for VEGF. *Bioessays* 2003;25:1052-60.
 89. Tiong A, Freedman SB. Gene therapy for cardiovascular disease: the potential of VEGF. *Curr Opin Mol Ther* 2004;6:151-9.
 90. Soffer E, Ouhayoun JP, Anagnostou F. Fibrin sealants and platelet preparations in bone and periodontal healing. *Oral Surg Oral Med Oral Pathol Oral Radiol Endod* 2003;95:521-8.
 91. Kawamura M, Urist MR. Human fibrin is a physiologic delivery system for bone morphogenetic protein. *Int Orthop* 1988;235: 302-10.
 92. Sanchez AR, Sheridan PJ, Kupp LI. Is platelet-rich plasma the perfect enhancement factor? A current review. *Int J Oral Maxillofac Implants* 2003;18:93-103.
 93. Froum SJ, Wallace SS, Tarnow DP, Cho SC. Effect of platelet-rich plasma on bone growth and osseointegration in human maxillary sinus grafts: three bilateral case reports. *Int J Periodontics Restorative Dent* 2002;22:45-53.

94. Marx RE, Carlson ER, Eichstaedt RM, Schimmele SR, Strauss JE, Georgeff KR. Platelet-rich plasma: growth factor enhancement for bone grafts. *Orai Surg Orai Med Orai Pathol Orai Radiol Endod* 1998;85:638-46.
95. Zechner W, Tang I S, Tepper G, Furst G, Bernhart T, Haas R, et al. Influence of platelet-rich plasma on osseous healing of dental implants: a histologic and histomorphometric study in minipigs. *Int J Orai Maxillofac Implants* 2003; 18:15-22.
96. Wiltfang J, Schlegel KA, Schuitze-Mosgau S, Nkenke E, Zimmermann R, Kessler P. Sinus floor augmentation with beta-tricalciumphosphate (beta-TCP): does platelet-rich plasma promote its osseous integration and degradation? *Clin Orai Implants Res* 2003;14:213-8.
97. Soffer E, Ouhayoun JP, Anagnostou F. Fibrin sealants and platelet preparations in bone and periodontal healing. *Orai Surg Orai Med Orai Pathol Orai Radiol Endod* 2003;95:521-8.
98. Dohan D, Donsimoni J-M, Navarro G, Gaultier F. [Platelet concentrates. Part 1: Technologies.] *Implantodontie* 2003;12:5-16. French.
99. Dohan D, Donsimoni J-M, Navarro G, Gaultier F. [Platelet concentrates. Part 2: Associated biology.] *Implantodontie* 2003; 12: 17-25. French.
100. Gaultier F, Navarro G, Donsimoni J-M, Dohan D. [Platelet concentrates. Part 3: Clinical applications.] *Implantodontie* 2004; 13: 3-11. French.
101. Aghaloo TL, Moy PK, Freymiller EG. Investigation of platelet-rich plasma in rabbit cranial defects: a pilot study. *J Orai Maxillofac Surg* 2002;60:1176-81.
102. Aghaloo TL, Moy PK, Freymiller EG. Evaluation of platelet-rich plasma in combination with anorganic bovine bone in the rabbit cranium: a pilot study. *Int J Orai Maxillofac Implants* 2004; 19: 59-65.
103. Choi BH, Im CJ, Huh JY, Suh JJ, Lee SH. Effect of platelet-rich plasma on bone regeneration in autologous bone graft. *Int J Orai Maxillofac Surg* 2004;33:56-9.
104. Grageda E. Platelet-rich plasma and bone graft materials: a review and a standardized research protocol. *Implant Dent* 2004; 13:301-9.
105. Jakse N, Tangl S, Gilli R, Berghold A, Lorenzoni M, Eskici A, et al. Influence of PRP on autologous sinus grafts. An experimental study on sheep. *Clin Orai Implants Res* 2003;14:578-83.
106. Jensen TB, Rahbek O, Overgaard S, Soballe K. Platelet rich plasma and fresh frozen bone allograft as enhancement of implant fixation. An experimental study in dogs. *J Orthop Res* 2004;22:653-8.
107. Jensen TB, Rahbek O, Overgaard S, Soballe K. No effect of platelet-rich plasma with frozen or processed bone allograft around noncemented implants. *Int Orthop*, 2005.
108. Mazor Z, Peleg M, Garg AK, Luboshitz J. Platelet-rich plasma for bone graft enhancement in sinus floor augmentation with simultaneous implant placement: patient series study. *Implant Dent* 2004;13:65-72.
109. Oyama T, Nishimoto S, Tsugawa T, Shimizu F. Efficacy of platelet-rich plasma in alveolar bone grafting. *J Orai Maxillofac Surg* 2004;62:555-8.
110. Wiltfang J, Kloss FR, Kessler P, Nkenke E, Schuitze-Mosgau S, Zimmermann R, Schlegel KA. Effects of platelet-rich plasma on bone healing in combination with autologous bone and bone substitutes in critical-size defects. An animal experiment. *Clin Orai Implants Res* 2004;15:187-93.
110. Bonucci E, Marini E, Valdinucci F, Fortunato G. Osteogenic response to hydroxyapatite-fibrin implants in maxillofacial bone defects. *Eur J Orai Sci* 1997;105:557-61.
111. Gible JW, Ness PM. Fibrin glue: the perfect operative sealant? *Transfusion* 1990;30:741-7.
112. Yamada Y, Boo JS, Ozawa R, Nagasaka T, Okazaki Y, Hata K, Ueda M. Bone regeneration following injection of mesenchymal stem cells and fibrin glue with a biodegradable scaffold. *J Craniomaxillofac Surg* 2003;31:27-33.
113. Tayapongsak P, O'Brien DA, Monteiro CB, Arceo-Diaz LY. Autologous fibrin adhesive in mandibular reconstruction with particulate cancellous bone and marrow. *J Orai Maxillofac Surg* 1994;52:161-5, discussion 166.
114. Matras H. Fibrin sealant in maxillofacial surgery. Development and indications. A review of the past 12 years. *Facial Plast Surg* 1985;2:297-313.

115. Matras H. Fibrin seal: the state of the art. *J Oral Maxillofac Surg* 1985;43:605-11.
116. Gurevich O, Vexler A, Marx G, Prigozhina T, Levdansky L, Slavin S, et al. Fibrin microbeads for isolating and growing bone marrow-derived progenitor cells capable of forming bone tissue. *Tissue Eng* 2002;8:661-72.
117. Choukroun J, Adda F, Schoeffler C, Vervelle A. Une opportunité en parodontologie: le PRF. *Implantodontie* 2001;42:55-62. French.
118. Choukroun, Simonpiéri, Schoeffler, Girard, Dohan Concentrés plaquettaires: technologies, biologie associée, applications cliniques, analyses histologiques: 4^e partie: analyses histologiques. *Implantodontie* 2004;13:167-172.
119. Van Hinsbergh VW, Cohen A, Koolwijk P. Role of fibrin matrix in angiogenesis. *Ann N Y Acad Sci* 2001;936:426-37.
120. Vinazzer H. Fibrin sealing: physiologic and biochemical background. *Facial Plast Surg* 1985;2:291-5.