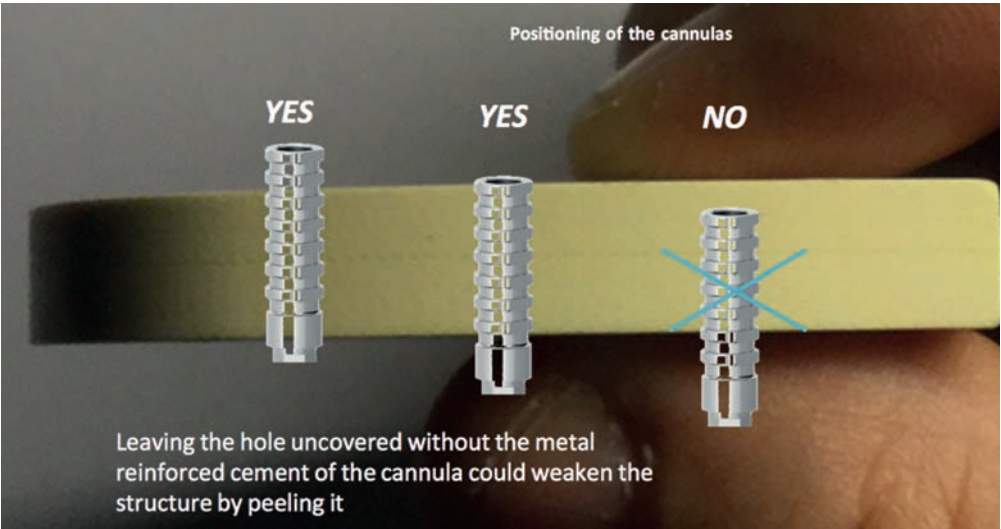


# TRILOR® ARCH

Indications



**Positioning of the cannulas**  
For a correct implementation of the framework, the height of the pillars or cannulas must be equal or greater than the thickness of the Trilor® Arch used, never lower. For this purpose it is recommended to shorten the pillars only after trying the framework.



**Recommended thicknesses**  
The minimum thickness of the free part between the two abutments shall be of 7 mm<sup>2</sup> (3,5x2 mm) (A). The possible cantilever (C ) shall be at maximum 10 mm.  
The minimum thickness near the holes for cementation with cannulas shall not go under 0,8 mm (B). For longer cantilever increase the section till 10-12 mm<sup>2</sup>.



**Bioloren S.r.l.**  
Via Alessandro Volta, 59  
21047 Saronno (VA), Italy  
Tel/Fax: +39 02 96703261  
**info@bioloren.com**  
**www.bioloren.com**

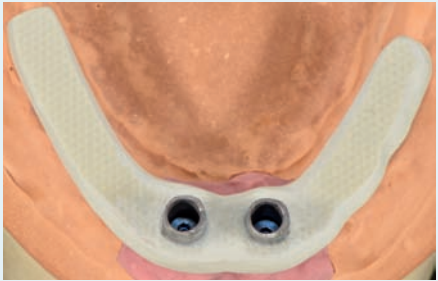
**MADE IN ITALY**

**bioloren®**  
metal free dental solutions



## TRILOR® ARCH

Pre-shaped arch for prosthetics



**TRILOR®**

**hi-tech framework** easy, versatile, cost effective

Rev. 4 - 06/2021

CE 0546

# TRILOR® ARCH

hi-tech technopolymer

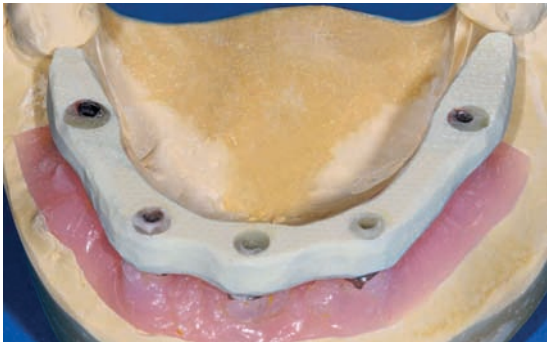
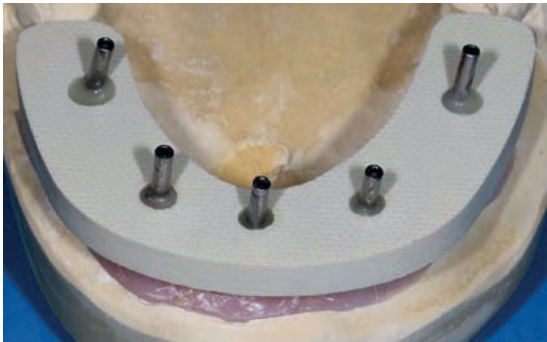
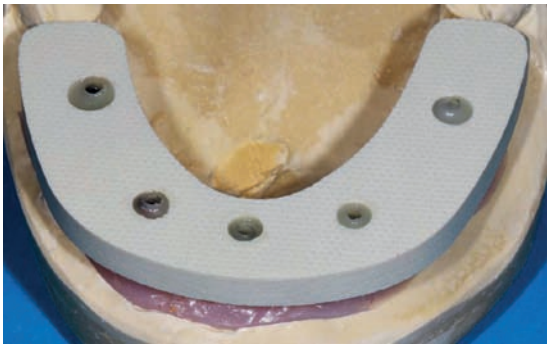
TRILOR® Arch, developed by Bioloren, is a new techno-polymer made of a resin matrix and a multi-direction fiberglass. FRC (Fiber-Reinforced Composites) are materials used for racing cars, airplanes and many other sectors where the demand of high toughness, low weight and high resistance to efforts are essential requirements.

## TRILOR® technical data:

Color:	white ivory
Tensile Strength:	380 MPa
Flexural Strength:	540 MPa
Compressive Strength (perpendicular):	530 MPa
Resilienza:	300 KJ/cm <sup>2</sup>
Elasticity modulus:	26 GPa
Density:	1,8 gr/cm <sup>3</sup>
Water absorption:	minimum
Not soluble in the water	

## TRILOR®: THE MOST VALID ALTERNATIVE TO METALS IN DENTAL PROSTHETICS

- No casting
- No bi-metallism
- No oxidation or corrosion
- No thermal shock
- Biocompatibilità
- Light weight
- Complete adhesion to acrylic and composite
- Cost saving



# TRILOR® ARCH

hi-tech technopolymer

## Trilor® Arch Standard is available in 3 thicknesses:

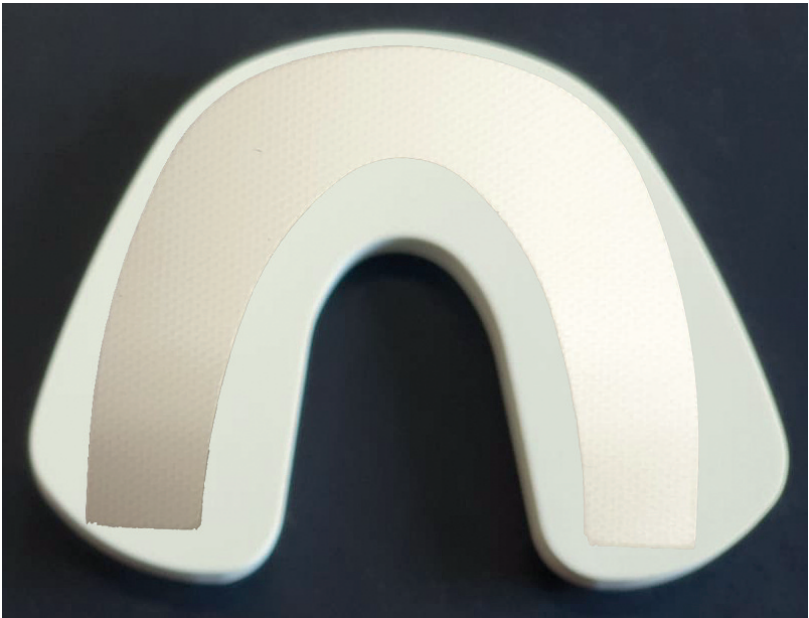
- H 3,5 mm: Provisional or definitive immediate loading. It can not be modified in thickness, but in width only. Ideal for reinforcement of total provisional prostheses.
- H 5,5 mm: The most used and the most versatile.
- H 7,5 mm: With its thickness it is possible to compensate any unevenness of vertical positioning of the implants. It is possible to make thimbles.

**Trilor® Arch New is wider in shape and allows the use of this method even in case of highly disparallel implants or implants outside the axis of the dental arch.**

## Is available in the following thicknesses:

- H 5,5 mm: white ivory
- H 7,5 mm: white ivory
- H 5,5 mm: pink

**Trilor® Arch pink** allows to solve some prosthetic or clinical needs.



# TRILOR® ARCH

Clinical case

## Indications for use

- Reinforcement bar on implants for immediate or deferred loads
- Support for immediate bridges
- Toronto structures
- Removable, partial or total prostheses with attachments
- Full arches
- Transfer key of the exact position of the implants

**Fixed - on - 3 with directional beams with Prama - Sweden Martina**  
**Dott. Davide Di Paola - Off. Odt.Viola**

